



**ALASKA DIVISION OF HOMELAND SECURITY &
EMERGENCY MANAGEMENT**



SITUATION REPORT 20-050 • FEB 19, 2020

Toll Free 1.800.478.2337

Anchorage Area 907.428.7000

SEOC 907.428.7100

<p><u>SEOC Preparedness Level</u> Level 1 – Routine Operations</p>	<p>http://ready.alaska.gov</p>	<p><u>National Terrorism Advisory System:</u> View this site for the latest NTAS bulletin: read the current NTAS Bulletin here.</p>
<p><u>Maritime Security (MARSEC)</u> Level:1-Minimum Appropriate Security Measures</p>	<p>WHO Novel Coronavirus outbreak (COVID-19): 2019 Novel Coronavirus</p>	<p><u>Alaska Military Installation Force Protection Level:</u> FPCON Bravo</p>

(Significant changes from previous situation reports are in red.)

THREAT LEVEL CHANGES SEOC LEVEL 1 – ROUTINE OPERATIONS

NTAS BULLETIN:

To read the current bulletin, select the link below to view the PDF version:

https://www.dhs.gov/sites/default/files/ntas/alerts/20_0118_ntas_bulletin.pdf

Significant Issues

None.

Travel Alerts and Conditions

Avalanche mitigation on Seward high way from mile markers 100.5 to 90 and 88 to 83 starting at 10:00am Wednesday until 3:00pm Wednesday

For current driving conditions dial 511 or link to <http://511.alaska.gov/>

Recent Earthquakes

USGS Earthquake Information: <http://earthquake.usgs.gov/>

National Tsunami Warning Center: <http://ntwc.arh.noaa.gov/>

Alaska Volcanoes

Cleveland Alert Level: Advisory and Aviation Color Code: Yellow

Pavlof Alert Level: Advisory and Aviation Color Code: Yellow

Shishaldin Alert Level: Advisory and Aviation Color Code: Yellow

Semisopchnoi Alert Level: Watch and Aviation Color Code: Orange

For Alaska Volcano updates, go to: <https://www.avo.alaska.edu/>

Air Quality Index (AQI) Advisories

No active advisories/episodes are currently in effect.

For the most up to date Air Quality Index Advisories:

<http://dec.alaska.gov/Applications/Air/airtoolsweb/Home/Index>

State of Alaska Department of Health and Social Services (DHSS)

DHSS is closely monitoring the rapidly-emerging outbreak of novel coronavirus (COVID-19).

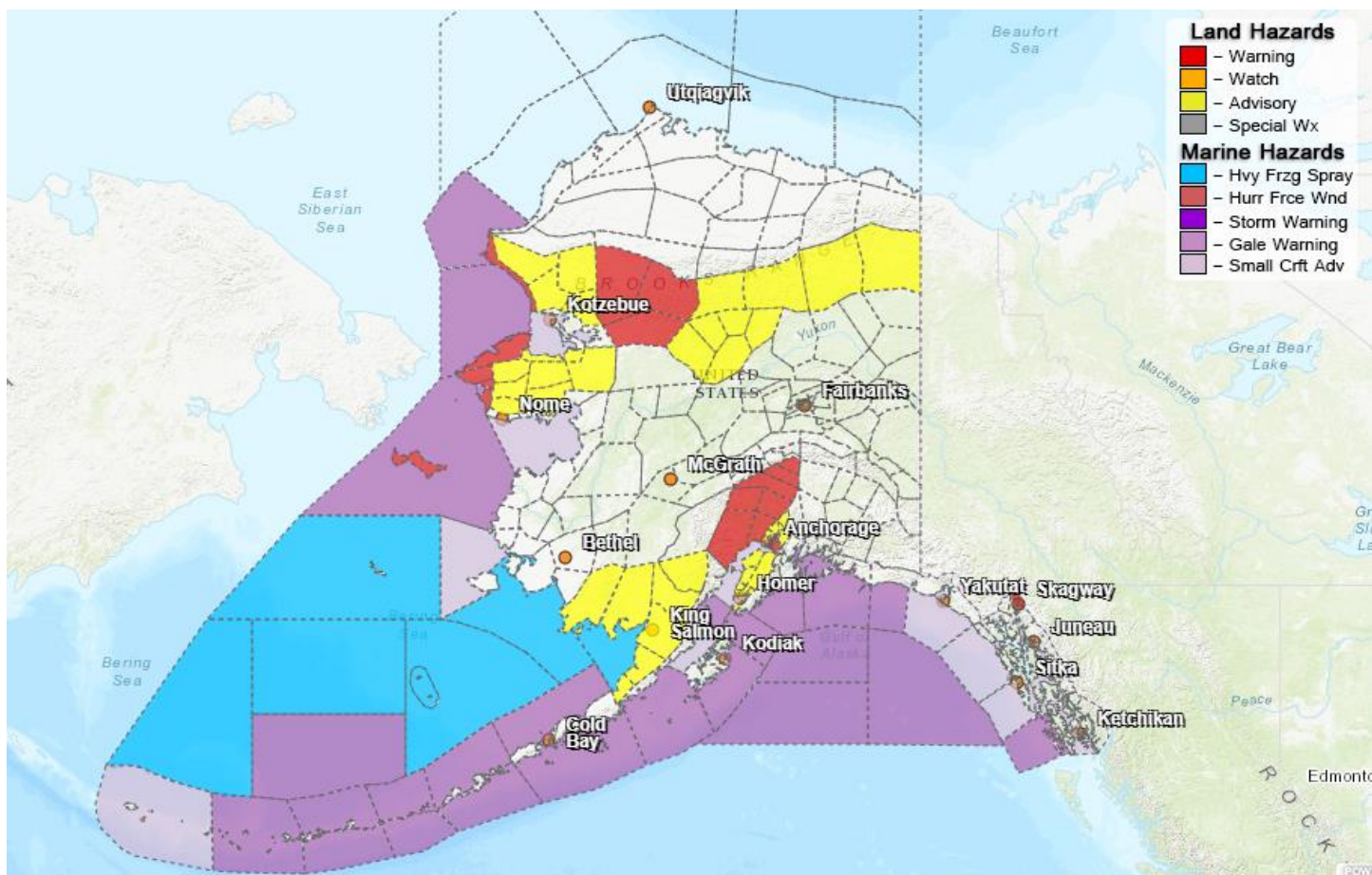
For more information about the outbreak refer to:

<http://dhss.alaska.gov/dph/Epi/id/Pages/Human-Coronavirus.aspx>

<https://www.cdc.gov/coronavirus/2019-ncov/index.html>

The Alaska DHSS website is located at <http://dhss.alaska.gov/Pages/default.aspx>

Significant Weather:



Winter Storm Warning in effect for the Upper Kobuk and Noatak Valleys until 12:00pm Wednesday.

Winter Weather Advisories in effect for the Lower Kobuk, Noatak valley, Northern and Interior Seward Peninsula, Upper Koyukuk Valley, Southeast Brooks Range, and Matanuska Valley until 12:00pm Wednesday

Blizzard Warning in effect for the Chukchi Sea Coast, Bering Strait Coast, and St. Lawrence Island until 6:00pm Wednesday.

For more information and the most current weather Watches / Warnings / Advisories go to:

<http://www.weather.gov/arh/>

Avalanche Hazards

Cordova: Avalanche Hazard is high above 2,000 feet, considerable below 2,000 feet, Moderate below 1,000 feet.

Valdez: Avalanche Hazard is high at all elevations.

Turnagain Pass: Avalanche Hazard is high at all elevations.

Hatcher Pass: Avalanche Hazard is considerable below 2,500 feet, and high hazard above 2,500 feet.

For more information and the most current avalanche forecasts go to: <https://alaskasnow.org/>

Spills of Oil and Hazardous Substances

The ADEC Spill Prevention and Response page is located at

<http://dec.alaska.gov/spar/ppr/spill-information/response/>

Alaska Cyber Security Information

State Employees may sign up for cyber security notifications and alerts at

<https://oit.alaska.gov/Security>

The Next Situation Report: will be 20 February 2020 at 8:00 am. A significant change in the situation or the threat level will prompt an interim report.

This report is posted on the internet at <https://ready.alaska.gov/sitrep>. To register for email distribution, go to <http://list.state.ak.us/mailman/listinfo/dhsem.situation.report>. Direct questions regarding this report to the SEOC at 907-428-7100 or seoc@alaska.gov.